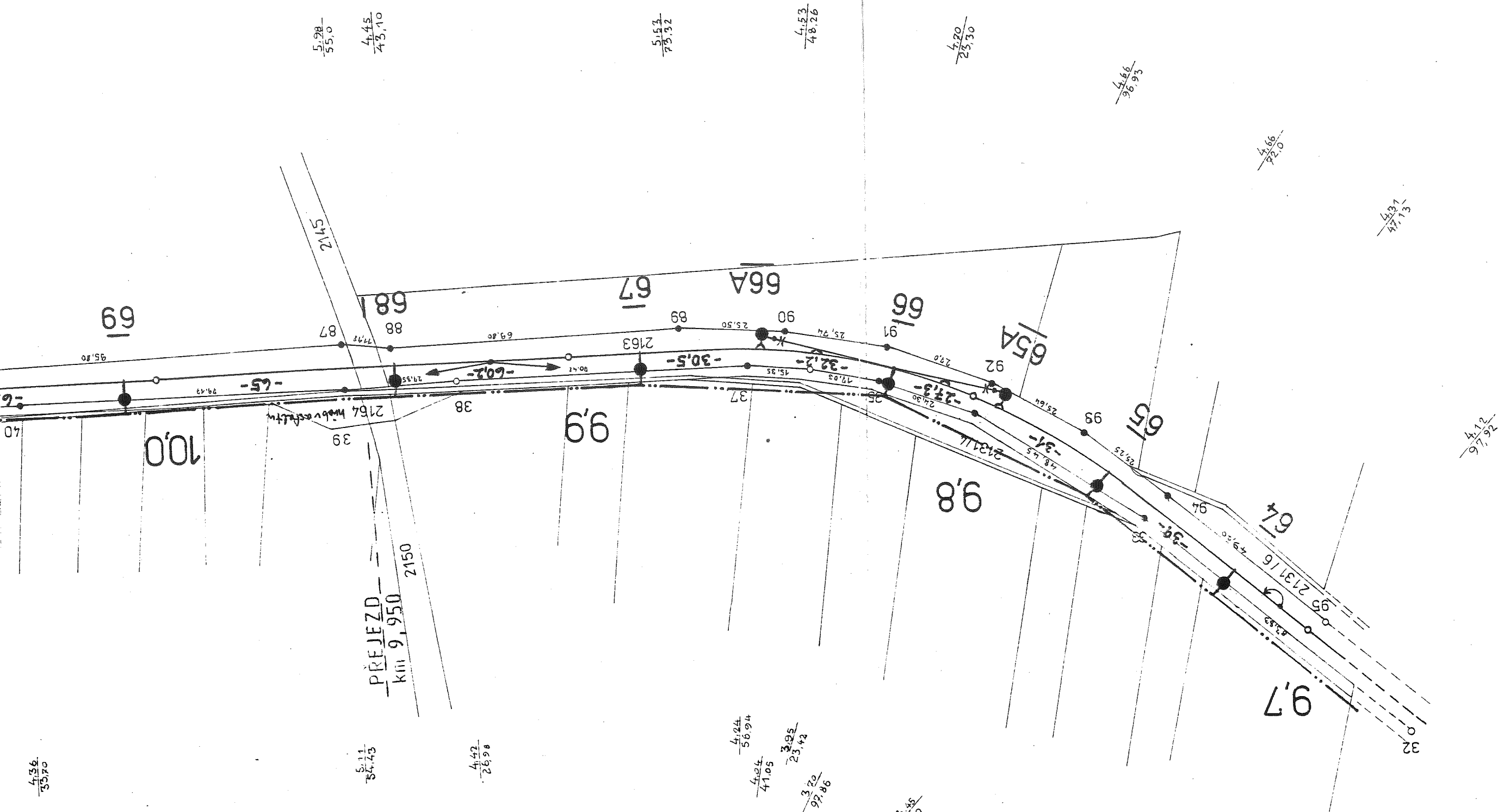


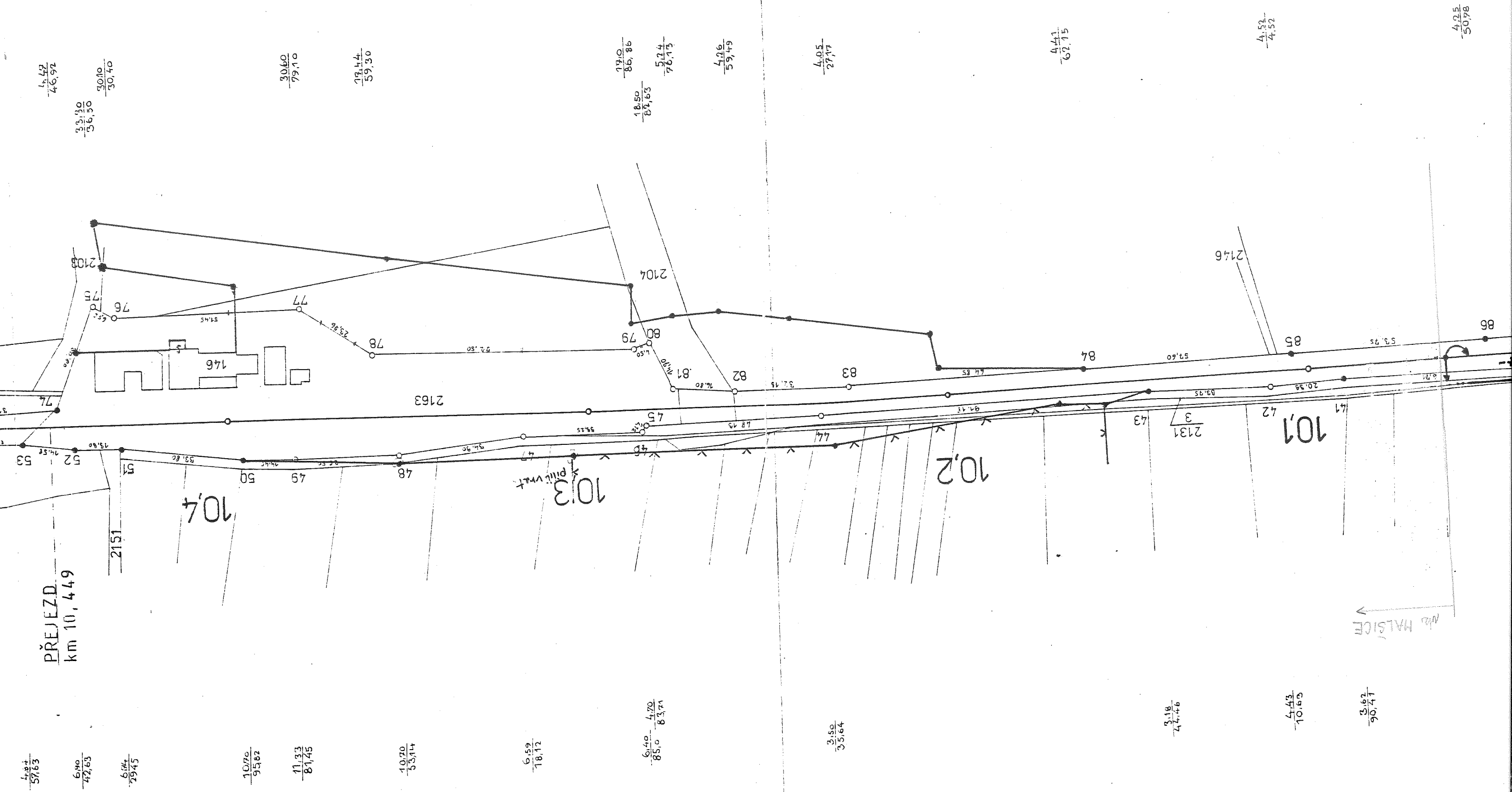
km 9,7 - 10,6
k.u. Malšice

- meznik
- kotik
- nerabivost



km 10, 449

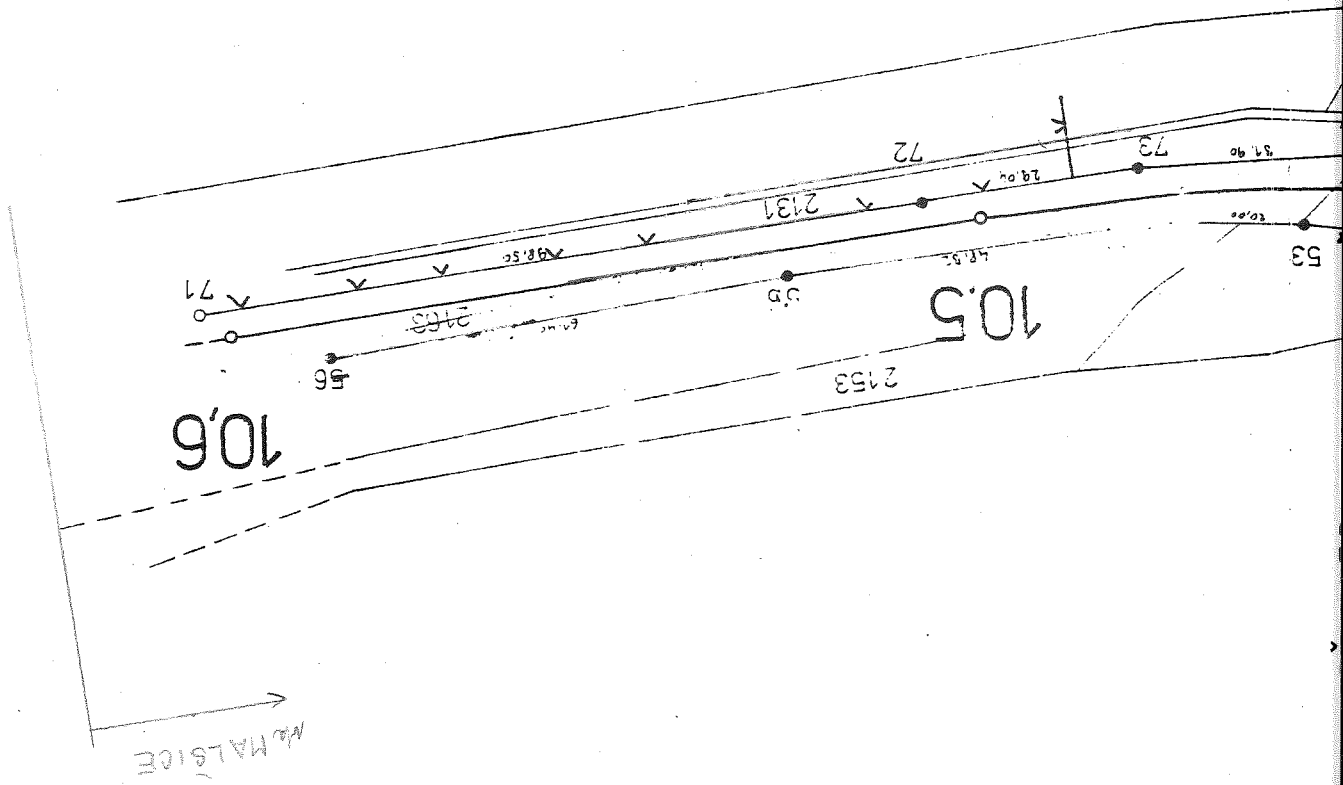
WALSH



$$\frac{3.43}{4.28}$$

$$\frac{3.44}{7.38}$$

$$\frac{3.52}{78.54}$$



$$\frac{4.90}{87.41}$$

$$\frac{3.57}{26.20}$$

$$\frac{3.73}{77.64}$$

$$\frac{4.84}{57.63}$$